

## Boil-off Gas Compressors for LNG

Cryogenic gas reciprocating compressors operating with an inlet temperature up to  $-160^{\circ}\text{C}$ .

High efficiency and highly reliable piston ring compressor.

### API618 piston compressors for LNG

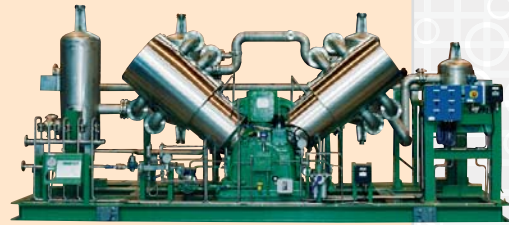
- Skid-mounted to facilitate installation and start-up.
- Specially designed for installation and maintenance in restricted spaces.
- Highly flexible control of gas flow rates and gas inlet temperature variation.
- Typical two-stage design perfectly matches the needs of LNG services.

### Technical Standard

- The experience of SIAD Macchine Impianti engineers, in terms of the service we offer our customers, has resulted in a certified standard which can be adapted to the many requirements of small, medium-size and large industries.
- Perfect thermal isolation of the process gas ensures that heat is not transmitted from the interior to the exterior or vice-versa during compression.
- Adapts to variable working conditions (intake pressure and flow rate).
- Sector-specific know-how in the

### Industries

- LNG Regasification Terminals
- LNG Storage depots
- LNG Carrier



selection of critical components, including piston rings and rider rings, ensures reliable construction and reduction of maintenance operations.

- Suction and delivery valves in special steel alloy, to ensure the same mechanical characteristics of outstanding strength, toughness and fatigue resistance even at very low temperatures.

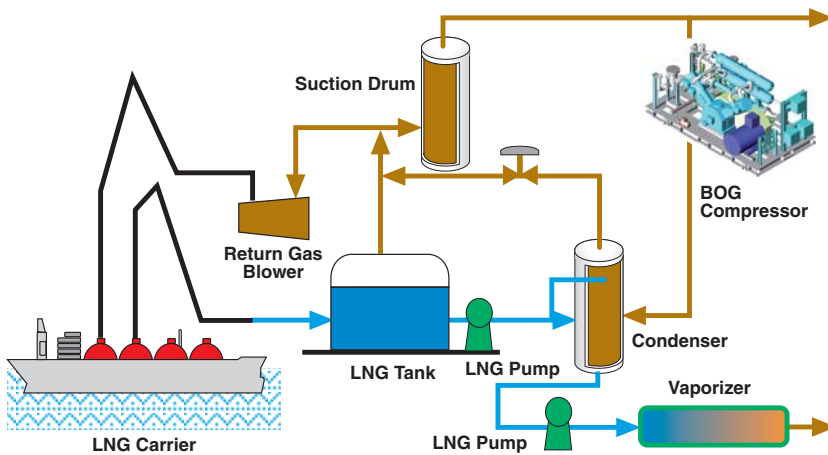
Compressor model	Capacity Nm <sup>3</sup> /h	Inlet pressure bar (a)	Outlet pressure bar (a)	Number of stages	Speed RPM	Installed power kW
TS2/130-E2	160	1.08	7	2	490	11
TS2/250-E2	380	1.08	7	2	490	22
WS2/400-E2	720	1.08	7	2	490	45
WS2/400-E2	900	1.08	7	2	598	45
WS2/900-E2	1400	1.08	7	2	490	75
WS3/1160-E2	1850	1.08	7	2	490	90
WS3/1700-E2	2300	1.08	7	2	490	110
MS2/1502-E2	2800	1.08	7	2	490	132
MS2/1552-E2	3150	1.08	7	2	490	150
MS3/2552-E2	4600	1.08	7	2	370	250
MS3/2552-E2	5200	1.08	7	2	420	250
2HPX2	6000	1.08	7	2	490	315
2HD2	8000	1.08	7	2	490	355
2HPX4	12000	1.08	7	2	490	550
2HD4	16400	1.08	7	2	490	750

Other models of Boil-off Gas compressor are available on request.



International manufacturing and safety standards

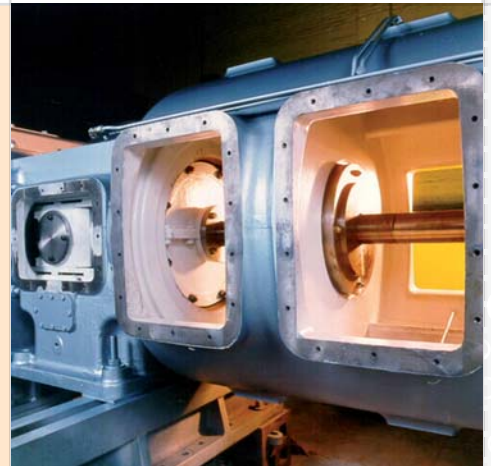
- Standard API618 Fifth Edition



Find out more about our range of services at our website [www.siadmi.com](http://www.siadmi.com)

### Integrated Technical Services

- Technical Assistance Service 7 days a week, 24 hours a day, number: **+39 335 1421103**
- Network of Authorised Assistance Centres throughout the world
- Authentic, ready-to-use replacement parts from stock
- Global Service contracts
- Predictive maintenance
- Mechanalysis



For further information:  
[manuela.teocchi@siadmi.com](mailto:manuela.teocchi@siadmi.com)



© 2009 SIAD Macchine Impianti S.p.A.  
All rights reserved.

The information contained herein is offered for use by technically qualified personnel at their discretion and risk without warranty of any kind.

We regularly update our data, for updated data please visit our web site [www.siadmi.com](http://www.siadmi.com).

Printed in Italy  
153uk06/09

[www.siadmi.com](http://www.siadmi.com)

SIAD Macchine Impianti S.p.A.  
Via Canovine, 2/4  
24126 Bergamo  
Italy

Tel.  
+39 035 327611

Fax  
+39 035 316131