



BS Line
All-inclusive compression
systems for PET bottle blowing



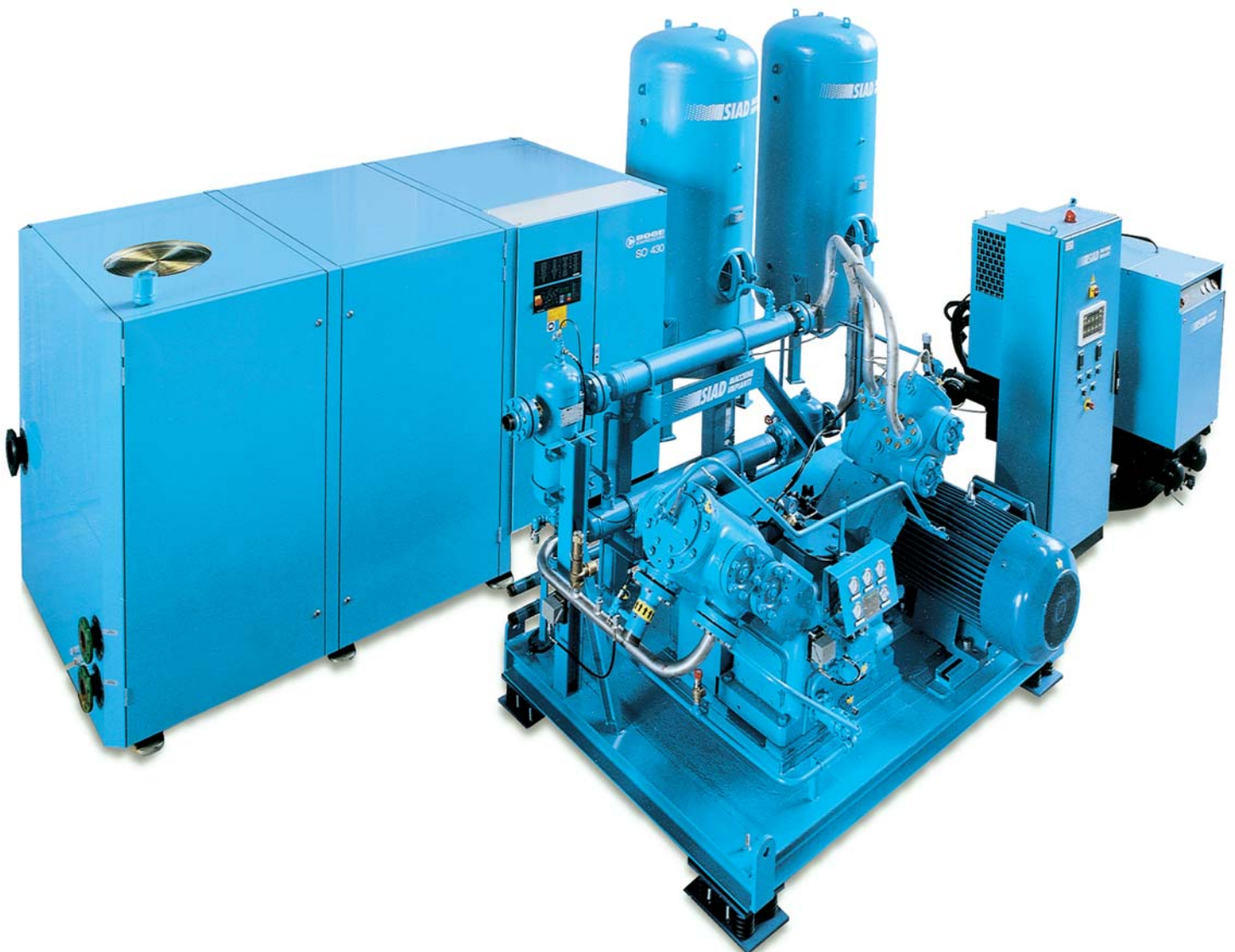
BS Line: a series of all-inclusive, completely oil-free packages

The latest development from SIAD Macchine Impianti and BOGE is a series of unique packages to meet all the blow-moulding plant's needs.

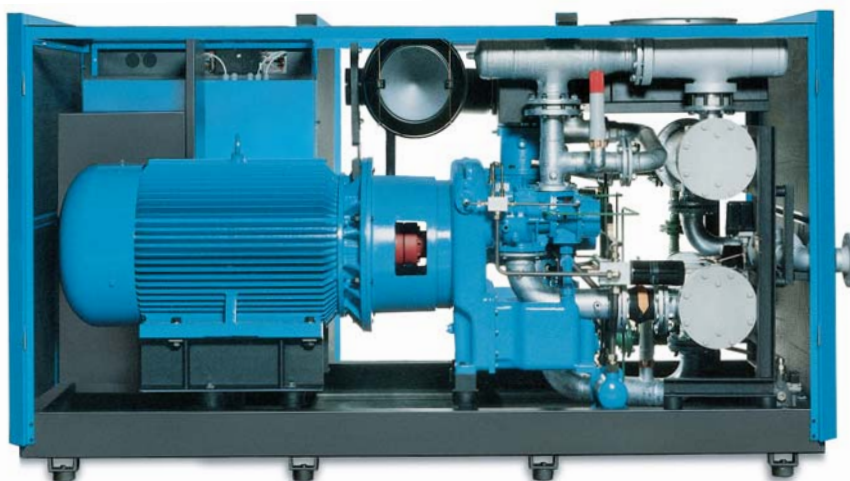
A single system able to supply quality air at both 10 and 40 bar.

Two compressors in a single unit: the ideal package in terms of convenience, cost and flexibility.

The **BS Line** has been created by combining two complementary compressors, one screw and one piston type, both oil-free, which form a single package in order to offer a totally oil-free air quality, in line with the standards required by blow-moulding machines.



Advantages



Screw + booster system

- capability to deliver air at 10 bar, with no extra costs
- increased delivery-rate at high altitudes and/or temperatures achievable by increasing the size of just one of the two compressors
- longer servicing intervals than the conventional system.

BOGE oil-free screw compressor

- internal layout clearly defined into three sections leads to easy access to all components

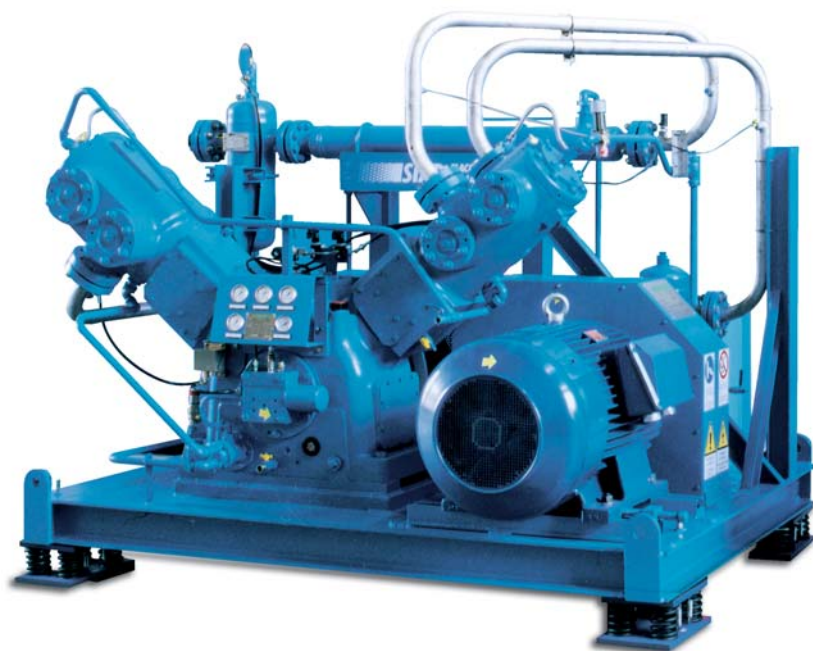
- water cooled copper bundle intercooler and aftercooler for easy maintenance and cleaning
- separate flange mounted oil pump to lubricate the sealed bearings immediately after start.

SIAD Macchine Impianti oil-free reciprocating booster

- better separation of oil and compressed air thanks to the vertical or “V” formation cylinders
- less degradation of parts subject to wear, also thanks to the vertical or “V” formation cylinders
- easy installation, since the compressor does not require anchoring to the ground.

Chiller dryer

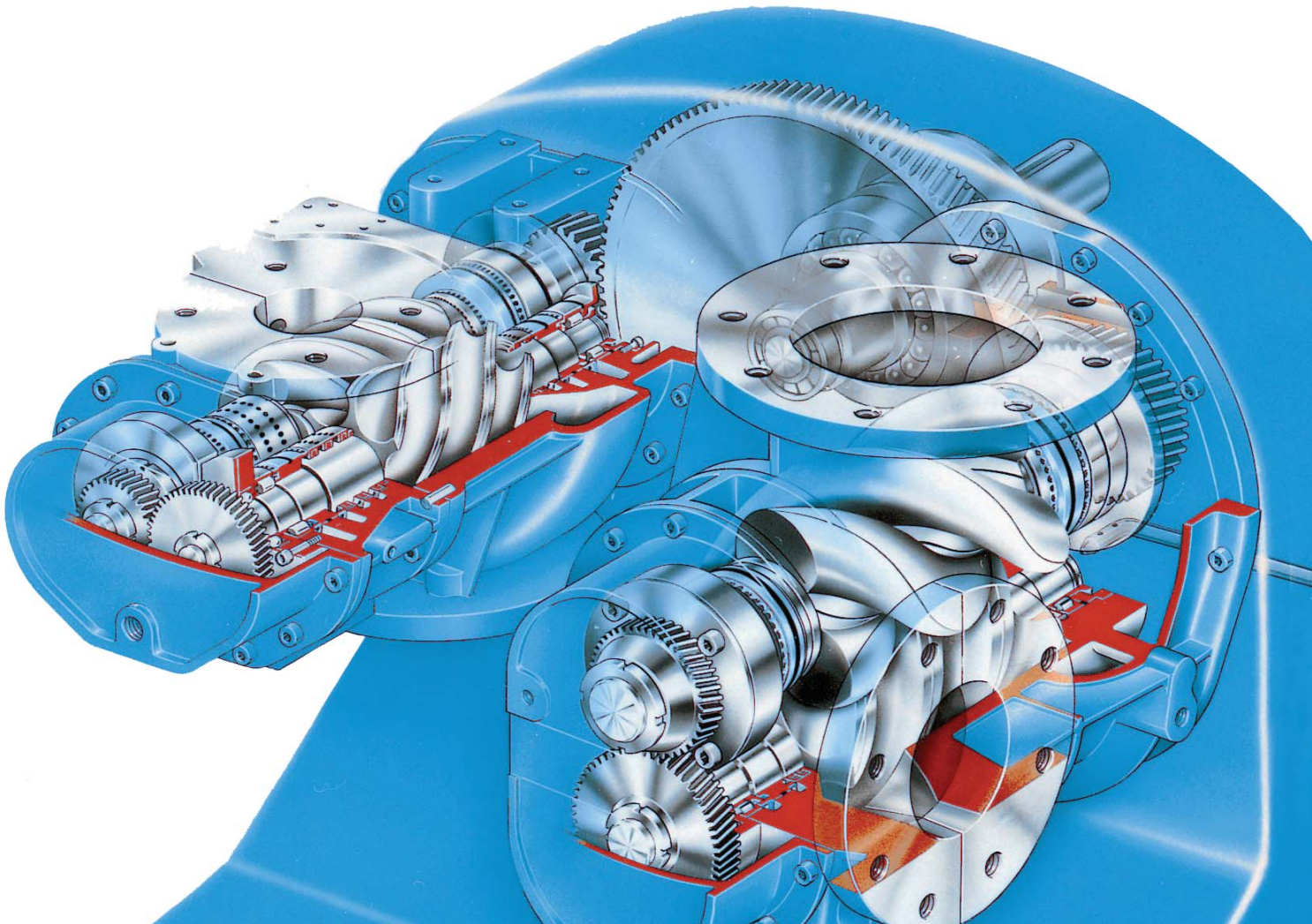
- extremely accurate control of the dew-point
- continuous operation, unaffected by the compressors and/or weather or environmental conditions
- very little servicing required.



10 bar pressure with German engineering precision

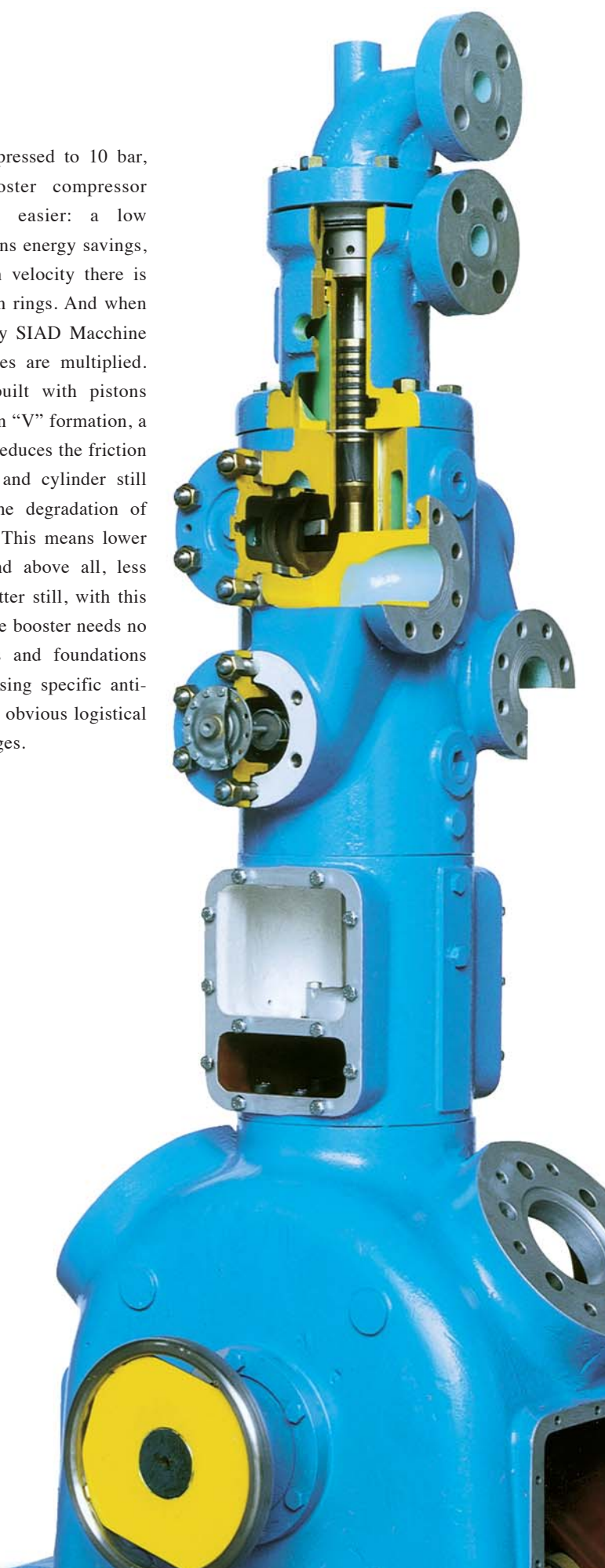
A gem of German precision engineering and solid dependability, the BOGE screw compressor features a painstakingly designed two stage airend for very low specific power requirements, amply dimensioned airend roller bearings of highest quality and virtually corrosion free rotors, coated for a long life.

This means less wear and steady performance. The advantages to the customer are economic, first and foremost: maintenance is simplicity itself, and efficiency remains constant over time.



Easy on pressure 10 to 40 bar

With air already compressed to 10 bar, the job of the booster compressor becomes that much easier: a low compression ratio means energy savings, and with lower piston velocity there is less wear on the piston rings. And when the booster is made by SIAD Macchine Impianti the advantages are multiplied. This is a machine built with pistons stroking vertically or in “V” formation, a feature of design that reduces the friction between piston rings and cylinder still further, minimizing the degradation of parts subject to wear. This means lower maintenance costs, and above all, less frequent servicing. Better still, with this type of construction the booster needs no permanent anchorages and foundations but can be installed using specific anti-vibration mounts, with obvious logistical and economic advantages.



A chiller dryer: the highest precision

In the **BS Line** packages, close attention has been given to every detail in the effort to ensure a perfect outcome. So the selection of a 40 bar chiller dryer is no accident, given that the dew-point control it provides is practically infallible.

Neither is there any need to worry about ambient conditions, since the operating logic of the chiller dryer offers steady performance even with changes in climate and operation at high altitudes, whatever the rate of flow.



The BS Line models

BS Line has been designed in order to match all the possible requirements a plant may have.

The model name shows the characteristics of the compression line. The two numbers in the name indicate the quantity of 1.5 litre bottles produced

(approximate number expressed in thousand) and the air overflow available at 10 bar (expressed in m³/h) at the sea level.

I.e. a **BS 19-150** is able to produce 19,000 b/h approx. and has additional 150 m³/h of air at 10 bar, at the sea level.

BS LINE model	Oil-free screw compressor model	Oil-free screw compressor output [m ³ /h] FAD 10 bar	Oil-free reciprocating booster model	Oil-free reciprocating booster output [m ³ /h] FAD 40 bar	Chiller dryer model	Additional low pressure output [m ³ /h] FAD 10 bar
BS 14-0	SO 180	1164	WS1 085 B	1150	SF HPD 260	0
BS 14-200	SO 220	1368	WS1 085 B	1150	SF HPD 340	200
BS 14-400	SO 269	1560	WS1 085 B	1150	SF HPD 340	400
BS 17-0	SO 220	1368	WS1 085 M	1350	SF HPD 340	0
BS 17-200	SO 269	1560	WS1 085 M	1350	SF HPD 340	200
BS 17-400	SO 270	1704	WS1 085 M	1350	SF HPD 340	380
BS 19-0	SO 269	1560	WS1 085 S	1560	SF HPD 340	0
BS 19-150	SO 270	1704	WS1 085 S	1560	SF HPD 340	150
BS 19-500	SO 340	2052	WS1 085 S	1560	SF HPD 340	500
BS 21-0	SO 270	1704	WS2 190 BB	1700	SF HPD 340	0
BS 21-400	SO 340	2052	WS2 190 BB	1700	SF HPD 340	400
BS 26-0	SO 340	2052	WS2 190 B	2050	SF HPD 640	0
BS 26-700	SO 430	2700	WS2 190 B	2050	SF HPD 640	650
BS 26-900	SO 480	3000	WS2 190 B	2050	SF HPD 640	950
BS 29-400	SO 430	2700	WS2 190 M	2300	SF HPD 640	400
BS 29-700	SO 480	3000	WS2 190 M	2300	SF HPD 640	700
BS 34-0	SO 430	2700	WS2 190 S	2700	SF HPD 640	0
BS 34-300	SO 480	3000	WS2 190 S	2700	SF HPD 640	300
BS 38-0	SO 480	3000	WS2 190 SS	3000	SF HPD 640	0

The company was founded in 1927 as a maker of machines for compressing gas and air. Having developed its business in Italy over the years, in the last ten years SIAD Macchine Impianti has set up a worldwide sales network that currently includes 50 agents.

Today, SIAD Macchine Impianti has grown to the point of becoming a world leader in the construction of PET-blowing compressors, with installations in place worldwide and more than 20 dedicated service centres across the five continents.

All of which reflects the fruit of continuous research, constant updating of machines, and significant investments in personnel and technology.



Founded in 1907 in Bielefeld, Germany, BOGE KOMPRESSOREN today is an international synonym for complete and reliable supply of compressed air.

A market-oriented range of products and services includes conventional and oil-free piston, screw and turbo compressors. Customers requirements can be accommodated worldwide based on proven virtues: technical know-how, the ability to provide individual solutions and innovative flexibility.

In Europe BOGE is one of the market leaders in the compressed air sector. Global BOGE is represented in many countries by subsidiaries and authorized business partners.

